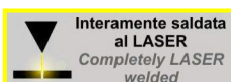
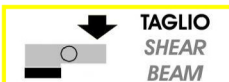


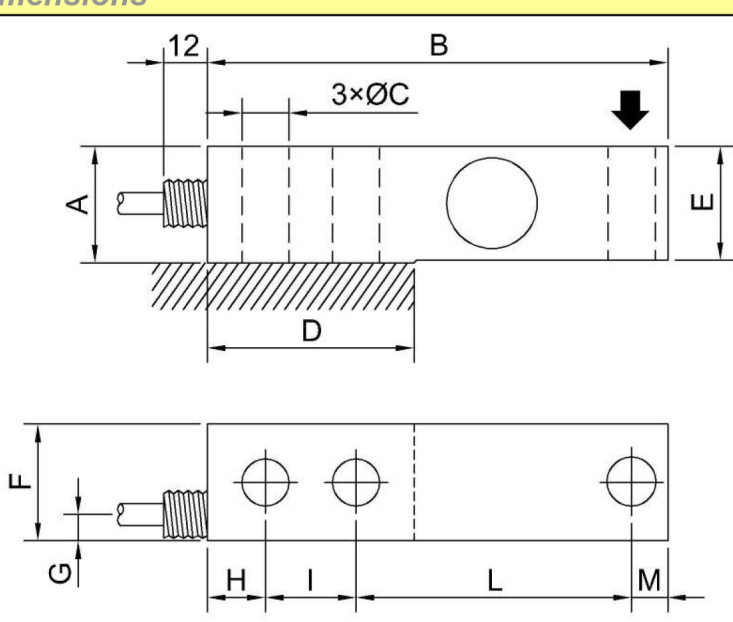
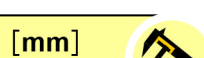
Accessori Accessories



UPFT1
Unità di pesatura.
Weighing unit.



Dimensioni Dimensions



FT1	CODE (C2)	CODE (C3)	LOAD	A	B	ØC	D	E	F	G	H	I	L	M
	CFT1350KC25	CFT1350KC35	350 kg	32.2	127	13	57	31.5	32.2	7	16	25	76	10
CFT1500KC25	CFT1500KC35	500 kg												
CFT11TC25	CFT11TC35	1 t												
CFT12TC25	CFT12TC35	2 t												
CFT13TC25	CFT13TC35	3 t	45	180	21	85	45	Ø57	12	18	38.1	105.9	18	
CFT15TC25	CFT15TC35	5 t												
CFT17TC25	CFT17TC35	7.5 t												

FT1A	CODE (C2)	CODE (C3)	LOAD	A	B	ØC	D	E	F	G	H	I	L	M
	CFT1A500KC25	CFT1A500KC35	500 kg	32.2	127	13	57	31.5	32.2	7	16	25	76	10
CFT1A1TC25	CFT1A1TC35	1 t												
CFT1A2TC25	CFT1A2TC35	2 t												

Dati Tecnici

Technical Data



CLASSE DI PRECISIONE: OIML R60	ACCURACY CLASS: OIML R60	C2	C3
DIVISIONI LEGALI	LEGAL DIVISIONS	2000	3000
CARICO NOMINALE (E _{max})	NOMINAL LOAD (E _{max})	350-500 kg 1-2-3-5-7.5t	
INTERVALLO MINIMO DI VERIFICA (V _{min})	MINIMUM VERIFICATION INTERVAL (V _{min})	E _{max} / 1000 (FT1A: E _{max} / 1500)	
ERRORE COMBINATO	COMBINED ERROR	≤ ±0.024%	≤ ±0.020%
NON RIPETIBILITÀ	NON REPEATABILITY	≤ ±0.012%	≤ ±0.010%
RITORNO A ZERO dopo 30 min.	ZERO RETURN over 30 min.	≤ ±0.028%	≤ ±0.020%
CREEP al carico nominale:	CREEP at nominal load:		
a) dopo 30 min.	a) over 30 min.	≤ ±0.026%	≤ ±0.010%
b) dopo 20 e 30 min.	b) over 20 and 30 min.	≤ ±0.012%	≤ ±0.008%
EFFETTO DELLA TEMPERATURA (10 °C)	TEMPERATURE EFFECT (10 °C)		
a) sullo zero	a) on zero	≤ ±0.026%	≤ ±0.014%
b) sulla sensibilità	b) on sensitivity	≤ ±0.020%	≤ ±0.014%
SENSIBILITÀ NOMINALE	NOMINAL SENSITIVITY	2mV/V	
TOLLERANZA DI CALIBRAZIONE	SENSITIVITY TOLERANCE	≤ ±0.1%	
RESISTENZA DI INGRESSO	INPUT RESISTANCE	420 ± 20Ω	
RESISTENZA DI USCITA	OUTPUT RESISTANCE	350 ± 2Ω	
RESISTENZA DI ISOLAMENTO	INSULATION RESISTANCE	> 5 GΩ	
BILANCIAMENTO DI ZERO	ZERO BALANCE	≤ ±1% (FT1A: ≤ ±0.5%)	
ALIMENTAZIONE DI RIFERIMENTO	RECOMMENDED SUPPLY VOLTAGE	10 V	
ALIMENTAZIONE NOMINALE	NOMINAL SUPPLY VOLTAGE	1-15 V	
ALIMENTAZIONE MAX.	MAXIMUM SUPPLY VOLTAGE	18 V	
VALORI MECCANICI LIMITE riferiti al carico nominale:	MECHANICAL LIMIT values referred to nominal load:		
a) carico minimo	a) minimum load	0%	
b) carico di servizio	b) service load	120%	
c) carico limite	c) max permissible load	150%	
d) carico di rottura	d) breaking load	>300%	
e) massimo carico trasversale	e) max transverse load	50%	
f) carico dinamico limite	f) max permissible dynamic load	50%	
FRECCIA MAX. AL CARICO NOMINALE	DISPLACEMENT AT NOMINAL LOAD	from -0.2 to -0.5 mm	
TEMPERATURA DI RIFERIMENTO	REFERENCE TEMPERATURE	+23°C	
CAMPO NOMINALE DI TEMPERATURA	TEMPERATURE NOMINAL RANGE	-10/+40 °C	
TEMPERATURA DI ESERCIZIO	SERVICE TEMPERATURE	-20/+70 °C	
TEMPERATURA DI STOCCAGGIO	STORAGE TEMPERATURE	-20/+80 °C	
PESO	WEIGHT	~ 1.1 kg	~ 2.6 kg
CLASSE DI PROTEZIONE (EN 60529)	PROTECTION CLASS (EN 60529)	IP68 (100h at 1m water column)	
MATERIALE DELLA CELLA	EXECUTION MATERIAL	Acciaio Inox / Stainless Steel	
LUNGHEZZA CAVO	CABLE LENGTH	5m	
VITI DI FISSAGGIO:	FIXING SCREWS		
a) diametro	a) diameter	M12	M20
b) classe di resistenza	b) resistance class	12.9	12.9
c) coppia di serraggio	c) tightening torque	150 Nm	160 Nm

Accelerazione di gravità g=9.80434 m/s²
Acceleration of gravity g=9.80434 m/s²

Collegamenti Elettrici

Electrical Connections

FT1	Load Cell	OUTPUT	CABLE	CAVO
		EXCITATION+ EXCITATION - OUTPUT+ OUTPUT-	Red Black White Yellow Shield*	Rosso Nero Bianco Giallo Schermo*

Cavo schermato PVC 105°C, Ø 5.2mm a 4 conduttori Ø0.35mm² stagnati.
PVC 105°C shielded cable, Ø5.2mm with 4 tinned Ø0.35mm² conductors.

FT1A	Load Cell	OUTPUT	CABLE	CAVO
		EXCITATION+ SENSE+ OUTPUT+ EXCITATION - SENSE- OUTPUT-	Red Orange White Black Blue Yellow *Shield	Rosso Arancione Bianco Nero Blu Giallo Schermo

Cavo schermato PVC 80°C, Ø 5.2mm a 6 conduttori Ø0.25mm² stagnati.
PVC 80°C shielded cable, Ø5.2mm with 6 tinned Ø0.25mm² conductors.

Collegato al corpo della cella di carico. / Connected to the body of the load cell.



41126 Cognento (MODENA) Italy Via Bottego 33/A Tel:+39-(0)59-346441 Fax:+39-(0)59-346437 E-mail: aep@aep.it

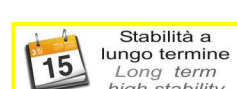
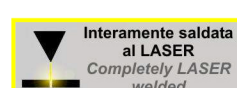
Al fine di migliorare le prestazioni tecniche del prodotto, la società si riserva di apportare variazioni senza preavviso.
In order to improve the technical performances of the product, the company reserves the right to make any change without notice.

Data Sheet: FT2.107.R4

Accessori Accessories



UPFT2
Unità di pesatura.
Weighing unit.



Dimensioni Dimensions



CODE (Class C2)	CODE (Class C3)	LOAD	A	B	ØC	ØD	E	ØF	G	H	I	L	M	N	O	P	Q
CFT2500KC25	CFT2500KC35	500 kg	47	18	13	30.3	100	17	11.2	36	36	7	16.5	63.5	98	22	200
CFT21TC25	CFT21TC35	1 t															
CFT22TC25	CFT22TC35	2 t															
CFT25TC25	CFT25TC35	5 t	70	24	22.5	36.3	118	25	12	47.8	48	8	20.6	66.5	123.7	24.2	235
CFT210TC25	CFT210TC35	10 t	82.6	32	27	56.3	140	32	21	63.5	60	8	26	82.6	139.7	31.7	280

